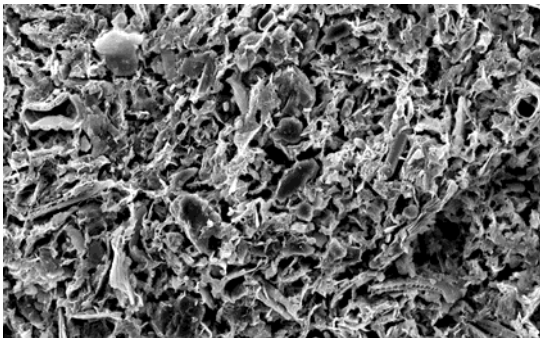
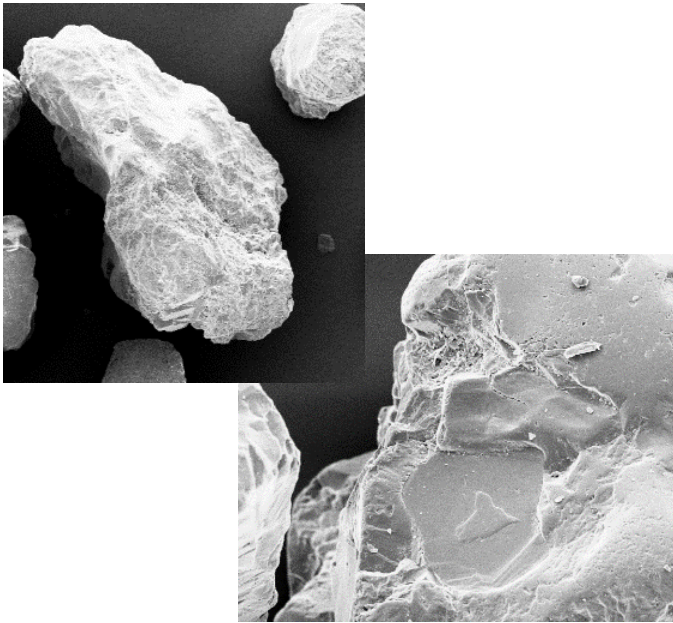


# International Symposium Geomechanics from Micro to Macro IS-Cambridge

1-3 September 2014, Cambridge, UK

This conference organised by ISSMGE TC105 (Geomechanics from Micro to Macro) is the premiere forum for the dissemination of new advances in the micro-macro relations of soil behaviour and its modelling.



The topics covered at the conference are  
**Micro and Macro Characterization**  
Experimental techniques, Visualization of particle movement, Particle shape, size and grading, Friction and contacts

**Micro-Macro Relationships**  
Stress-strain relationship, Yielding and failure, Stress-dilatancy, Grain crushing, Creep and rate effects, Shear bands/compaction bands, Vibrations/dynamics, Granular flow, Erosion

**Micro-Macro Modelling**  
Discrete element modelling, Micromechanics, Continuum models with micro-characterisation, Large deformations, Fluid coupling

**Engineering Applications**  
In-situ tests, Slope stability, Foundations, Landslides and granular flow, Tunnelling, Hydraulic engineering, Railway and pavement engineering, Reservoir geomechanics, Offshore engineering

**Abstract deadline: 30 November 2013**  
**Full paper deadline: 28 February 2014**

The abstracts and papers are to be submitted from the conference website  
<http://is-cambridge.eng.cam.ac.uk>

The conference proceedings will be published by CRC Press. Selected papers will be published in a special issue of international journals in the area of geomechanics.



For further details, please contact:  
Professor Kenichi Soga  
University of Cambridge  
Trumpington Street  
Cambridge, CB2 1PZ UK  
E-mail: [issmge-tc105@eng.cam.ac.uk](mailto:issmge-tc105@eng.cam.ac.uk)

[is-cambridge.eng.cam.ac.uk](http://is-cambridge.eng.cam.ac.uk)